

UTILITY ALLOWANCE STUDY

Homes of Renaissance Preserve Phase I

Prepared For:

Renaissance Preserve

**4211 Romeo Lane
Ft. Myers, FL 33916**

Prepared By:

KN Consultants, LLC

P.O. Box 1212

Safety Harbor, Florida 34695-1212

jkellype@tampabay.rr.com

September 9, 2023

1 Basis for Utility Allowance Using Consumptive Model

Under 26 CFR 1.42-10(b)(4) owners generally used the applicable Public Housing Authority (PHA) utility allowance established for the Section 8 Program or used a local utility company estimate. An alternative method, under the amended utility allowance regulations at 26 CFR 1.42(b)(4)(ii)(E), the utility allowance estimates may be calculated using an energy consumption analysis model. The Energy Consumption Model must, at a minimum, take into account specific factors including, but not limited to, unit size, building orientation, design, and materials, mechanical systems, appliances and characteristics of the building location..

Such allowances are estimates of the expenses associated with different types of utilities and different utility uses. The utilities for which allowances may be provided include electricity, natural gas, propane, fuel oil, wood or coal, and water and sewage service, as well as trash and garbage collection. The functions, or end-uses, covered by an allowance may include space heating, water heating, cooking, refrigeration, lighting, and appliances. Note that allowances are not provided for telephone or television cable service.

Whether a household receives an allowance for a given utility service generally depends on the way the utilities are metered. Utilities can be metered in one of three ways: master-meter, check-metered, and individually metered. Allowances are provided for check-metered and individually metered utilities, but not master-metered utilities. An allowance may also be provided to residents for some non-metered utilities, because the residents pay for these services directly. Trash services are an example of a utility that is non-metered in some areas.

2 Introduction

The Housing Authority of the City of Fort Myers maintains and operates 96 one, two, three, four and five bedroom residential units at the Homes of Renaissance Preserve Phase I development.

The study was performed with the assistance of the Utility Allowance Guidebook published in September 1998 and eQuest modeling software produced and developed by the US Department of Energy. This study uses the engineering-based methodology, that can be used to establish utility allowances. This method is based on engineering calculations and other technical information that is used to estimate the amount of energy or water a household should reasonable require.

The tenants are responsible for individual-metered electric, water and sewer utilities. The units in these developments are very similar to one another, with the basic difference being the number of bedrooms. Therefore, this study recommends utility allowances for only those utilities based on the number of bedrooms for an individual unit.

Trash collection is not paid directly by the tenants. No utility allowances are provided for these services.

3 Utility Allowance Recommendations

The following Utility Allowance recommendations are for residences of Homes of Renaissance Preserve Phase I:

Homes of Renaissance Preserve Phase I

Monthly Utility Allowance	1 BR	2 BR S	2 BR L	3 BR TH	4 BR TH	5 BR TH
Electric	\$74	\$100	\$113	\$131	\$159	\$186
Water	\$21	\$29	\$29	\$36	\$50	\$65
Sewer	\$45	\$64	\$64	\$84	\$103	\$122
Total	\$140	\$193	\$206	\$251	\$312	\$373
Previous						
Change	\$140	\$193	\$206	\$251	\$312	\$373

4 Utilities Cost

4.1 Electricity

Monthly Electricity Cost

Monthly Electricity Cost	1 BR	2 BR S	2 BR L	3 BR TH	4 BR TH	5 BR TH
Customer Charge	\$11.33	\$11.33	\$11.33	\$11.33	\$11.33	\$11.33
Energy Charge	\$62.92	\$88.56	\$101.61	\$120.15	\$147.78	\$174.44
Total Electric	\$74.25	\$99.88	\$112.93	\$131.48	\$159.11	\$185.77

4.1.1 Electric Rates

FPL serve Homes of Renaissance Preserve Phase I. FPL rates can be found on their website www.FPL.com. FPL's rates are as follows:

Customer Charge: \$11.33

Energy Charge (First 1,000kWh) = \$0.14390

Energy Charge (All additional kWh) = \$0.16661

4.1.2 Monthly Energy Charge

Monthly Consumption

Total Consumption	1 BR	2 BR S	2 BR L	3 BR TH	4 BR TH	5 BR TH
Electric (kWh)	437	615	706	835	1023	1183
Energy Charge <1,000(\$/kWh)	\$62.92	\$88.56	\$101.61	\$120.15	\$143.90	\$143.90
Energy Charge >1,000(\$/kWh)	\$0.00	\$0.00	\$0.00	\$0.00	\$3.89	\$30.55
Energy Cost	\$62.92	\$88.56	\$101.61	\$120.15	\$147.78	\$174.44

4.2 Water

Monthly Water Cost

Monthly Water Cost	1 BR	2 BR	3 BR	4 BR	5 BR
Customer Charge	\$10.16	\$10.16	\$10.16	\$10.16	\$10.16
Water Charge	\$11.18	\$18.64	\$26.09	\$39.71	\$54.62
Total Water	\$21.35	\$28.80	\$36.26	\$49.87	\$64.79

4.2.1 Water Rates

Water utility rates are based on Ft. Myers Utilities rates. The Ft. Myers Utilities can be found at www.cityftmyers.com.

Customer Charge (\$/mo):	\$10.16
Water Charge (0 to 5,000 gal, \$/1000gal):	\$5.48
Water Charge, 5,001 gal to 10,000 gal (\$/1000 gal):	\$10.96

4.2.2 Monthly Water Charge

Water	1 BR	2 BR	3 BR	4 BR	5 BR
Water Consumption (gal)	2,042	3,403	4,764	6,125	7,486
Water Charge (0 to 5,000gal)	\$11.18	\$18.64	\$26.09	\$27.39	\$27.39
Water Charge (5,001 to 10,000gal)	\$0.00	\$0.00	\$0.00	\$12.32	\$27.23
Total Water Charge	\$11.18	\$18.64	\$26.09	\$39.71	\$54.62

4.2 Sewer

Monthly Sewer Cost

Monthly Sewer Cost	1 BR	2 BR	3 BR	4 BR	5 BR
Customer Charge	\$15.96	\$15.96	\$15.96	\$15.96	\$15.96
Sewer Charge	\$28.97	\$48.28	\$67.59	\$86.91	\$106.22
Total Sewer	\$44.93	\$64.24	\$83.55	\$102.87	\$122.18

4.2.1 Sewer Rates

Sewer utility rates are based on Ft. Myers Utilities rates. The Ft. Myers Utilities can be found at www.cityftmyers.com.

Customer Charge (\$/mo):	\$15.96
Sewer Charge (\$/1000gal):	\$14.19

4.2.2 Monthly Sewer Charge

Water	1 BR	2 BR	3 BR	4 BR	5 BR
Water Consumption (gal)	2,042	3,403	4,764	6,125	7,486
Sewer Charge	\$28.97	\$48.28	\$67.59	\$86.91	\$106.22
Total Sewer Charge	\$28.97	\$48.28	\$67.59	\$86.91	\$106.22

5.0 Consumption Studies

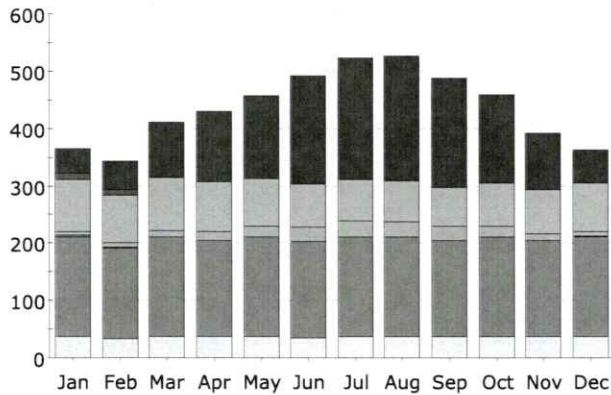
Water Consumption

The following water consumption data is based on the 1999 study of Residential End Uses of Water published by the American Water Works Association.

Daily Water Consumption (gallons)	1 BR	2 BR	3 BR	4 BR	5 BR
Average Number of Occupants	1.5	2.5	3.5	4.5	5.5
Shower	13.2	22	30.8	39.6	48.4
Faucets	16.4	27.3	38.2	49.1	60.0
Laundry	22.5	37.5	52.5	67.5	82.5
Toilets	16.0	26.7	37.3	48.0	58.7
Total	68.1	113.4	158.8	204.2	249.5

Monthly Water Consumption

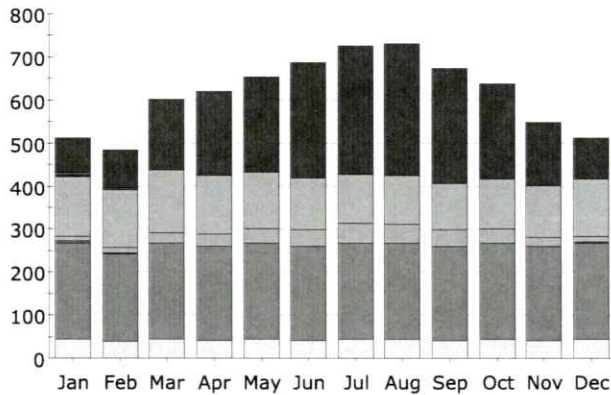
Monthly Water Consumption	1 BR	2 BR	3 BR	4 BR	5 BR
Water (Gal)	2,042	3,403	4,764	6,125	7,486

Electric Consumption (kWh)**Electric Consumption (kWh)**

	Jan	Feb	Mar	Apr	May	Jun	Jul	Aug	Sep	Oct	Nov	Dec	Total
Space Cool	43.5	50.4	96.7	123.1	144.5	187.5	210.6	216.6	190.3	154.2	98.0	56.9	1,572.2
Heat Reject.	-	-	-	-	-	-	-	-	-	-	-	-	-
Refrigeration	-	-	-	-	-	-	-	-	-	-	-	-	-
Space Heat	11.0	9.5	-	-	-	-	-	-	-	-	-	0.5	20.9
HP Supp.	0.6	0.2	-	-	-	-	-	-	-	-	-	-	0.9
Hot Water	89.3	83.8	92.8	86.8	84.5	76.3	72.9	71.3	68.6	73.7	76.5	85.3	961.7
Vent. Fans	6.5	7.2	12.5	15.9	18.7	24.6	27.7	28.5	25.0	19.9	12.4	7.1	206.0
Pumps & Aux.	3.2	3.0	-	-	-	-	-	-	-	-	0.4	1.6	8.2
Ext. Usage	-	-	-	-	-	-	-	-	-	-	-	-	-
Misc. Equip.	173.8	156.7	173.0	168.0	173.3	167.5	173.8	173.0	168.0	173.5	168.0	173.8	2,042.6
Task Lights	-	-	-	-	-	-	-	-	-	-	-	-	-
Area Lights	37.2	33.4	36.5	35.8	36.7	35.4	37.2	36.5	35.9	36.9	35.9	37.2	434.4
Total	365.0	344.3	411.5	429.6	457.7	491.3	522.1	525.9	487.7	458.3	391.1	362.3	5,247.0

Gas Consumption (Btu)

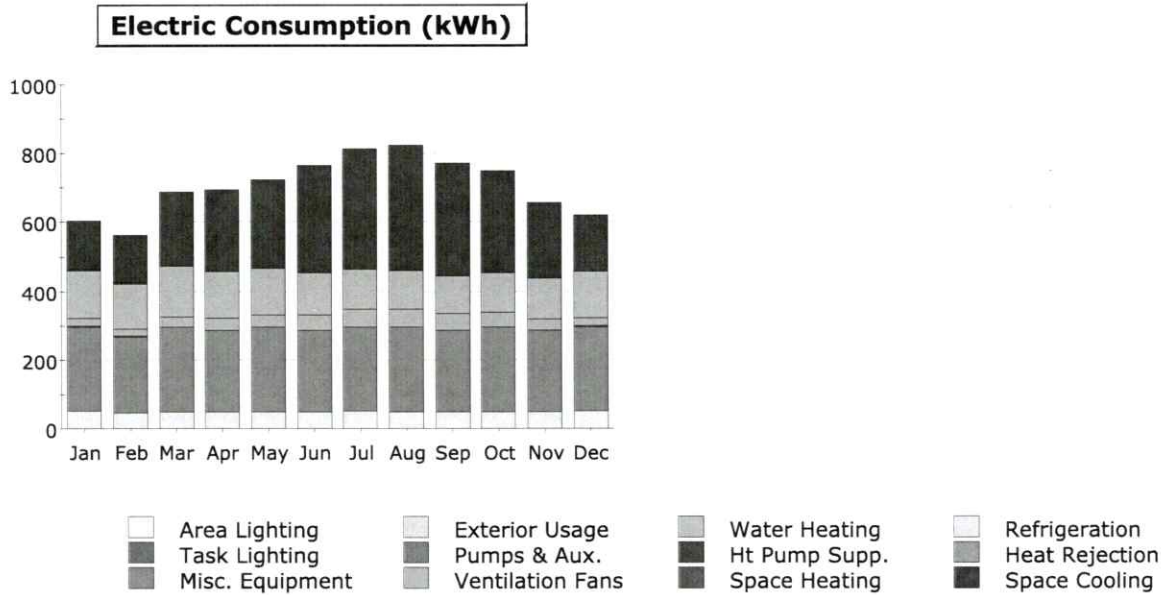
	Jan	Feb	Mar	Apr	May	Jun	Jul	Aug	Sep	Oct	Nov	Dec	Total
Space Cool													
Heat Reject.													
Refrigeration													
Space Heat													
HP Supp.													
Hot Water													
Vent. Fans													
Pumps & Aux.													
Ext. Usage													
Misc. Equip.													
Task Lights													
Area Lights													
Total													

Electric Consumption (kWh)**Electric Consumption (kWh)**

	Jan	Feb	Mar	Apr	May	Jun	Jul	Aug	Sep	Oct	Nov	Dec	Total
Space Cool	77.6	88.8	164.8	194.9	219.9	267.4	297.7	304.8	265.9	222.2	147.4	95.8	2,347.1
Heat Reject.	-	-	-	-	-	-	-	-	-	-	-	-	-
Refrigeration	-	-	-	-	-	-	-	-	-	-	-	-	-
Space Heat	9.4	6.1	-	-	-	-	-	-	-	-	-	0.2	15.7
HP Supp.	0.7	0.2	-	-	-	-	-	-	-	-	-	-	0.9
Hot Water	139.4	131.4	146.5	137.3	133.5	121.0	115.3	112.8	108.2	115.7	119.7	133.2	1,514.0
Vent. Fans	11.7	13.1	23.8	28.5	32.2	39.5	44.0	45.1	39.1	32.2	20.8	13.2	343.3
Pumps & Aux.	3.2	3.1	-	-	-	-	-	-	-	-	0.4	1.6	8.3
Ext. Usage	-	-	-	-	-	-	-	-	-	-	-	-	-
Misc. Equip.	224.9	202.8	224.0	217.4	224.3	216.8	224.8	224.0	217.4	224.5	217.4	224.9	2,643.1
Task Lights	-	-	-	-	-	-	-	-	-	-	-	-	-
Area Lights	43.9	39.4	43.1	42.3	43.3	41.8	43.8	43.1	42.3	43.6	42.3	43.9	512.6
Total	510.7	484.8	602.1	620.4	653.2	686.5	725.7	729.8	672.9	638.1	548.0	512.7	7,384.9

Gas Consumption (Btu)

	Jan	Feb	Mar	Apr	May	Jun	Jul	Aug	Sep	Oct	Nov	Dec	Total
Space Cool													
Heat Reject.													
Refrigeration													
Space Heat													
HP Supp.													
Hot Water													
Vent. Fans													
Pumps & Aux.													
Ext. Usage													
Misc. Equip.													
Task Lights													
Area Lights													
Total													

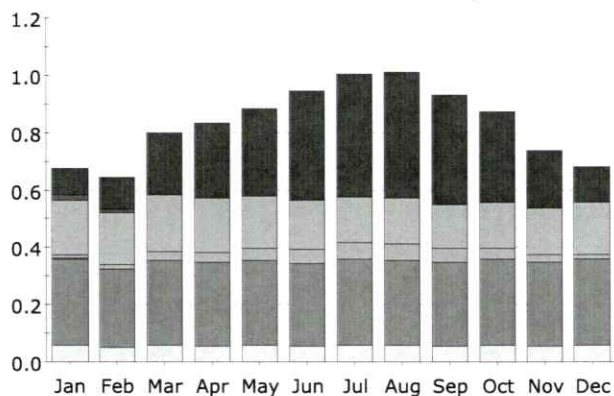
**Electric Consumption (kWh)**

	Jan	Feb	Mar	Apr	May	Jun	Jul	Aug	Sep	Oct	Nov	Dec	Total
Space Cool	138.5	138.6	216.6	235.4	257.7	313.7	349.9	363.1	330.1	293.6	218.2	166.4	3,021.8
Heat Reject.	-	-	-	-	-	-	-	-	-	-	-	-	-
Refrigeration	-	-	-	-	-	-	-	-	-	-	-	-	-
Space Heat	4.4	2.6	-	-	-	-	-	-	-	-	-	-	7.0
HP Supp.	0.4	0.1	-	-	-	-	-	-	-	-	-	-	0.5
Hot Water	139.4	131.3	146.4	137.3	133.5	121.0	115.4	112.9	108.2	115.7	119.7	133.1	1,513.9
Vent. Fans	20.1	20.1	31.3	33.8	36.8	45.0	50.3	52.4	47.8	42.5	31.4	23.5	435.0
Pumps & Aux.	3.2	3.1	-	-	-	-	-	-	-	-	0.4	1.6	8.2
Ext. Usage	-	-	-	-	-	-	-	-	-	-	-	-	-
Misc. Equip.	246.9	222.7	245.9	238.7	246.2	238.1	246.9	245.9	238.8	246.6	238.8	246.9	2,902.3
Task Lights	-	-	-	-	-	-	-	-	-	-	-	-	-
Area Lights	50.0	44.9	49.1	48.2	49.4	47.6	50.0	49.1	48.3	49.7	48.3	50.0	584.7
Total	602.9	563.4	689.3	693.4	723.7	765.5	812.5	823.3	773.1	748.0	656.7	621.5	8,473.3

Gas Consumption (Btu)

	Jan	Feb	Mar	Apr	May	Jun	Jul	Aug	Sep	Oct	Nov	Dec	Total
Space Cool													
Heat Reject.													
Refrigeration													
Space Heat													
HP Supp.													
Hot Water													
Vent. Fans													
Pumps & Aux.													
Ext. Usage													
Misc. Equip.													
Task Lights													
Area Lights													
Total													

(x000)

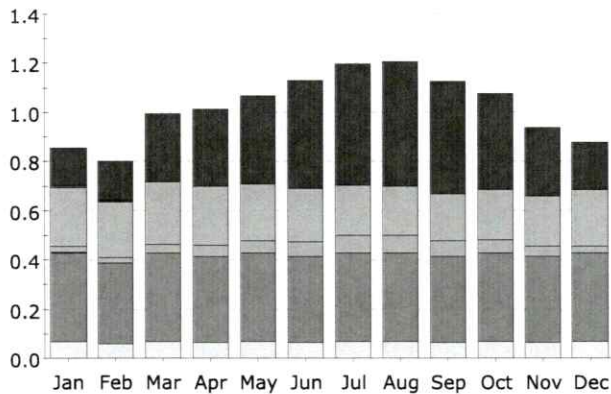
Electric Consumption (kWh)**Electric Consumption (kWh x000)**

	Jan	Feb	Mar	Apr	May	Jun	Jul	Aug	Sep	Oct	Nov	Dec	Total
Space Cool	0.09	0.11	0.21	0.26	0.31	0.38	0.43	0.44	0.38	0.32	0.20	0.12	3.27
Heat Reject.	-	-	-	-	-	-	-	-	-	-	-	-	-
Refrigeration	-	-	-	-	-	-	-	-	-	-	-	-	-
Space Heat	0.02	0.01	-	-	-	-	-	-	-	-	-	0.00	0.03
HP Supp.	0.00	0.00	-	-	-	-	-	-	-	-	-	-	0.00
Hot Water	0.19	0.18	0.20	0.19	0.18	0.17	0.16	0.16	0.15	0.16	0.16	0.18	2.07
Vent. Fans	0.01	0.02	0.03	0.03	0.04	0.05	0.06	0.06	0.05	0.04	0.03	0.02	0.43
Pumps & Aux.	0.00	0.00	-	-	-	-	-	-	-	-	0.00	0.00	0.01
Ext. Usage	-	-	-	-	-	-	-	-	-	-	-	-	-
Misc. Equip.	0.30	0.27	0.30	0.29	0.30	0.29	0.30	0.30	0.29	0.30	0.29	0.30	3.53
Task Lights	-	-	-	-	-	-	-	-	-	-	-	-	-
Area Lights	0.06	0.05	0.06	0.06	0.06	0.05	0.06	0.06	0.06	0.06	0.06	0.06	0.67
Total	0.68	0.64	0.80	0.83	0.89	0.95	1.00	1.01	0.93	0.87	0.74	0.68	10.02

Gas Consumption (Btu)

	Jan	Feb	Mar	Apr	May	Jun	Jul	Aug	Sep	Oct	Nov	Dec	Total
Space Cool													
Heat Reject.													
Refrigeration													
Space Heat													
HP Supp.													
Hot Water													
Vent. Fans													
Pumps & Aux.													
Ext. Usage													
Misc. Equip.													
Task Lights													
Area Lights													
Total													

(x000)

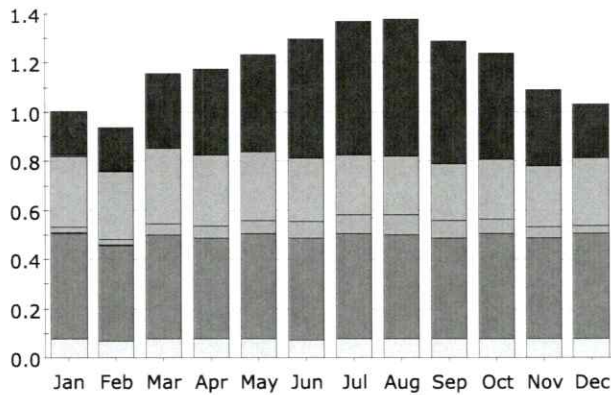
Electric Consumption (kWh)**Electric Consumption (kWh x000)**

	Jan	Feb	Mar	Apr	May	Jun	Jul	Aug	Sep	Oct	Nov	Dec	Total
Space Cool	0.15	0.16	0.28	0.32	0.36	0.44	0.50	0.51	0.46	0.39	0.28	0.19	4.04
Heat Reject.	-	-	-	-	-	-	-	-	-	-	-	-	-
Refrigeration	-	-	-	-	-	-	-	-	-	-	-	-	-
Space Heat	0.01	0.01	-	-	-	-	-	-	-	-	-	-	0.01
HP Supp.	0.00	0.00	-	-	-	-	-	-	-	-	-	-	0.00
Hot Water	0.24	0.23	0.25	0.24	0.23	0.21	0.20	0.20	0.19	0.20	0.21	0.23	2.63
Vent. Fans	0.02	0.02	0.04	0.04	0.05	0.06	0.07	0.07	0.06	0.06	0.04	0.03	0.56
Pumps & Aux.	0.00	0.00	-	-	-	-	-	-	-	-	0.00	0.00	0.01
Ext. Usage	-	-	-	-	-	-	-	-	-	-	-	-	-
Misc. Equip.	0.36	0.33	0.36	0.35	0.36	0.35	0.36	0.36	0.35	0.36	0.35	0.36	4.25
Task Lights	-	-	-	-	-	-	-	-	-	-	-	-	-
Area Lights	0.07	0.06	0.07	0.06	0.07	0.06	0.07	0.07	0.06	0.07	0.06	0.07	0.78
Total	0.85	0.80	0.99	1.01	1.07	1.13	1.20	1.21	1.12	1.08	0.94	0.88	12.28

Gas Consumption (Btu)

	Jan	Feb	Mar	Apr	May	Jun	Jul	Aug	Sep	Oct	Nov	Dec	Total
Space Cool													
Heat Reject.													
Refrigeration													
Space Heat													
HP Supp.													
Hot Water													
Vent. Fans													
Pumps & Aux.													
Ext. Usage													
Misc. Equip.													
Task Lights													
Area Lights													
Total													

(x000)

Electric Consumption (kWh)**Electric Consumption (kWh x000)**

	Jan	Feb	Mar	Apr	May	Jun	Jul	Aug	Sep	Oct	Nov	Dec	Total
Space Cool	0.17	0.18	0.31	0.35	0.39	0.49	0.54	0.56	0.50	0.43	0.31	0.22	4.45
Heat Reject.	-	-	-	-	-	-	-	-	-	-	-	-	-
Refrigeration	-	-	-	-	-	-	-	-	-	-	-	-	-
Space Heat	0.01	0.00	-	-	-	-	-	-	-	-	-	-	0.01
HP Supp.	0.00	0.00	-	-	-	-	-	-	-	-	-	-	0.00
Hot Water	0.29	0.27	0.31	0.29	0.28	0.26	0.25	0.24	0.23	0.24	0.25	0.28	3.18
Vent. Fans	0.02	0.02	0.04	0.05	0.05	0.07	0.08	0.08	0.07	0.06	0.04	0.03	0.62
Pumps & Aux.	0.00	0.00	-	-	-	-	-	-	-	-	0.00	0.00	0.01
Ext. Usage	-	-	-	-	-	-	-	-	-	-	-	-	-
Misc. Equip.	0.43	0.39	0.43	0.41	0.43	0.41	0.43	0.43	0.41	0.43	0.41	0.43	5.02
Task Lights	-	-	-	-	-	-	-	-	-	-	-	-	-
Area Lights	0.08	0.07	0.08	0.07	0.08	0.07	0.08	0.08	0.07	0.08	0.07	0.08	0.91
Total	1.00	0.94	1.16	1.18	1.23	1.30	1.37	1.38	1.29	1.24	1.09	1.03	14.20

Gas Consumption (Btu)

	Jan	Feb	Mar	Apr	May	Jun	Jul	Aug	Sep	Oct	Nov	Dec	Total
Space Cool													
Heat Reject.													
Refrigeration													
Space Heat													
HP Supp.													
Hot Water													
Vent. Fans													
Pumps & Aux.													
Ext. Usage													
Misc. Equip.													
Task Lights													
Area Lights													
Total													

Certification of Completeness and Accuracy for Utility Allowance Estimate Per Energy Consumption Model

Development Information		Tenant Paid Utilities		Provider
Development Name	Home of Renaissance Preserve Phase I	Yes <input type="checkbox"/>	Electric	FPL
Development Address	4211 Romeo Lane Ft. Myers, FL 33916	<input type="checkbox"/>	Gas	
		Yes <input type="checkbox"/>	Water	City of Fort Myers
Key Number	2278	Yes <input type="checkbox"/>	Sewer	City of Fort Myers
Date of Study	9/9/2023	<input type="checkbox"/>	Trash	
Effective Date		<input type="checkbox"/>	Other	

Unit Type	# of Units	Square Feet	Electric	Gas	Water	Sewer	Trash	Other	Total Per Month
1 bedroom	12	767	74		21	45			\$140
2 bedroom	14	905	100		29	64			\$193
2 bedroom TH	14	1033	113		29	64			\$206
3 bedroom TH	32	1183	131		36	84			\$251
4 bedroom TH	16	1378	159		50	103			\$312
	8	1600	186	5 Bedroom	65	122	Townhome		\$373
Total Units	96								

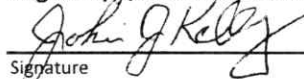
The undersigned hereby certifies as follows:

- Only utility costs paid directly by the resident(s) and not by or through the owner are included in the utility allowance calculation;
- Cable television, telephone and internet costs are excluded from utility allowance calculation;
- This estimate is based on the most recent 12-month period;
- In the case of new buildings with less than 12 months of consumption data, 12 months of data for units of similar size and construction in the properties geographic area was used;
- Utility rates are based on local rates and utility supplier(s) for the above-named property and data is no older than 60 days at the time of this submission;
- The owner and Engineer/Qualified Professional are not related, as defined in IRC Section 267(b) or 707(b);
- The Energy Consumption Model, at a minimum, takes into account specific factors including, but not limited to, unit size, building orientation, design and materials, mechanical systems, appliances, characteristics of the building location.

The following supporting documentation is included:

- A letter from the Engineer/Qualified Professional explaining their analysis and findings for each Building Identification Number (BIN). The letter must explain how the specific factors in item #7 above were addressed.
- Copy of the 90-day notice to residents.

Engineer/Qualified Professional:



9/9/23
 Signature Date

Printed Name

Entity Name

License # if applicable

Owner:


10-2-2023
 Signature of Legal Signatory Date

Marcia Davis
 Printed Name

Homes of Renaissance I
 Entity Name

Florida Housing Finance Corporation:

Signature - FHFC Compliance Department

Date